

# Performance Highlights

Rupees in millions

December 31	1996	1997	1998	
<b>ASSETS</b>				
Cash	8,858	7,748	9,548	
Lending to financial institutions	–	450	100	
Investment	15,518	20,142	25,583	
<b>Advances</b>	<b>35,511</b>	<b>39,798</b>	<b>45,878</b>	
Other assets	5,178	6,766	8,765	
Fixed assets	913	906	2,526	
Total assets - Gross	65,978	75,810	92,400	
Provision against non-performing assets	2,602	3,475	3,127	
Total assets - net of provision	63,376	72,336	89,273	
<b>LIABILITIES</b>				
<b>Customer deposits</b>	<b>56,221</b>	<b>64,415</b>	<b>77,980</b>	
Inter bank borrowings	3,691	3,929	4,805	
Bills payable	549	802	1,084	
Other liabilities	1,526	1,674	2,403	
<b>NET ASSETS / LIABILITIES</b>				
<b>Equity - Tier I</b>	<b>1,389</b>	<b>1,515</b>	<b>1,535</b>	
Share capital	851	1,063	1,063	
Share premium	–	–	–	
Reserves	438	452	456	
Reserves for issue of bonus shares	100	–	–	
Un - appropriated profit / (loss)	0.3	0.5	16	
Surplus on revaluation of assets	–	–	1,467	
<b>PROFITABILITY</b>				
Interest income	6,258	6,689	7,847	
Interest expenditure	3,802	4,639	5,290	
Spread	2,456	2,050	2,558	
Fee, Commission and Exchange income	1,133	1,552	1,034	
Capital gain	111	32	0.06	
Other income	69	123	102	
Operating expenses	3,020	2,961	3,396	
Profit before provisions	749	797	298	
Donations	–	–	–	
Provisions - (expense) / reversal	(515)	(736)	–	
Additional charge for employee benefit & other obligations	–	(32)	(128)	
Profit before taxation	234	29	170	
Taxation	(164)	(15)	(150)	
<b>Profit / (Loss) after taxation</b>	<b>70</b>	<b>14</b>	<b>20</b>	
<b>FINANCIAL RATIOS</b>				
<b>Return on average equity</b>	<b>%</b>	<b>5%</b>	<b>1%</b>	<b>1%</b>
Return on average assets	%	0.11%	0.02%	0.02%
Dividend per share	%	–	–	–
Dividend yield	%	–	–	–
Dividend payout ratio	%	–	–	–
<b>Advances to deposits ratio</b>	<b>%</b>	<b>63%</b>	<b>62%</b>	<b>59%</b>
Gross spread ratio	%	39%	31%	33%
<b>Income to expense ratio</b>	<b>Times</b>	<b>1.25</b>	<b>1.27</b>	<b>1.09</b>
Growth in gross income	%	2%	-0.3%	-2%
Growth in net profit after tax	%	-52%	-80%	43%
Total assets to shareholders' funds	Times	46	48	58
<b>Intermediation cost ratio</b>	<b>%</b>	<b>5.60%</b>	<b>4.91%</b>	<b>4.77%</b>
Capital adequacy ratio	%	–	9%	8%
<b>SHARE INFORMATION</b>				
Earning Per Share (EPS)	Rs.	0.82	0.13	0.18
*Price earnings ratio	%	–	–	–
*Market value per share - at the end of the year	Rs.	–	–	–
Book value per share - Tier-1	Rs.	16	14	14
Book value per share - total (including surplus on revaluation)	Rs.	16	14	28
<b>OTHER INFORMATION</b>				
Non - performing loans		4,818	6,425	8,314
Imports and Exports business		49,131	40,850	37,467
Number of employees	Nos.	8,998	8,114	7,994
Number of branches	Nos.	902	929	929



Rupees in millions

1999	2000	2001	2002	2003	2004	2005
10,583	10,199	11,394	11,472	11,205	12,320	18,035
300	5,976	8,643	10,839	15,361	16,175	5,777
26,550	18,067	15,456	33,592	40,735	57,321	44,830
<b>58,286</b>	<b>62,285</b>	<b>59,870</b>	<b>54,032</b>	<b>49,987</b>	<b>69,949</b>	<b>119,506</b>
10,997	11,499	10,831	8,760	7,305	7,499	8,309
3,106	3,067	3,006	2,835	2,596	2,552	4,720
109,823	111,092	109,199	121,530	127,189	165,817	201,177
2,996	5,178	5,631	9,065	9,673	10,890	9,008
106,827	105,914	103,568	112,465	117,516	154,926	192,170
<b>94,622</b>	<b>96,803</b>	<b>94,492</b>	<b>103,883</b>	<b>114,218</b>	<b>126,392</b>	<b>161,907</b>
5,629	6,766	7,743	7,483	2,665	12,538	9,694
1,073	940	1,227	1,400	1,773	2,534	2,449
2,490	3,375	3,317	3,204	2,835	3,206	5,085
<b>3,012</b>	<b>(1,970)</b>	<b>(3,210)</b>	<b>(3,506)</b>	<b>(3,974)</b>	<b>10,256</b>	<b>13,035</b>
1,546	(3,296)	(4,418)	(5,267)	(4,869)	9,448	11,400
1,063	1,063	1,063	1,063	1,063	4,405	4,405
-	-	-	-	-	10,640	4,316
481	481	481	481	558	717	1,020
-	-	-	-	-	-	-
2	(4,840)	(5,962)	(6,811)	(6,490)	(6,314)	1,659
1,467	1,326	1,208	1,762	895	808	1,636
9,414	8,047	8,285	7,497	4,985	5,245	9,847
6,953	6,379	5,032	3,727	1,155	794	2,025
2,461	1,668	3,252	3,770	3,830	4,451	7,822
1,322	1,070	844	723	617	1,520	1,471
16	68	(8)	477	1,198	65	196
87	96	219	272	328	155	264
3,740	3,725	3,471	3,537	3,681	3,964	4,256
146	(821)	836	1,705	2,292	2,227	5,496
-	-	-	-	-	-	15
53	(2,365)	(517)	(3,222)	(870)	(1,594)	(704)
(128)	(1,306)	(1,159)	(70)	(468)	(151)	-
71	(4,492)	(839)	(1,587)	954	482	4,777
(61)	(350)	(283)	517	(568)	(290)	(1,744)
<b>11</b>	<b>(4,842)</b>	<b>(1,122)</b>	<b>(1,069)</b>	<b>386</b>	<b>192</b>	<b>3,033</b>
<b>1%</b>	-	-	-	-	<b>8%</b>	<b>29%</b>
0.01%	-4.55%	-1.07%	-0.99%	0.34%	0.14%	1.75%
-	-	-	-	-	-	2.50
-	-	-	-	-	-	2.9%
-	-	-	-	-	-	36%
<b>62%</b>	<b>64%</b>	<b>63%</b>	<b>52%</b>	<b>44%</b>	<b>55%</b>	<b>74%</b>
26%	21%	39%	50%	77%	85%	79%
<b>1.04</b>	<b>0.78</b>	<b>1.24</b>	<b>1.48</b>	<b>1.62</b>	<b>1.56</b>	<b>2.28</b>
5%	-25%	48%	22%	14%	4%	58%
-46%	-46020%	77%	5%	136%	-50%	1482%
69	(32)	(23)	(21)	(24)	16	17
<b>4.33%</b>	<b>3.89%</b>	<b>3.63%</b>	<b>3.57%</b>	<b>3.38%</b>	<b>3.29%</b>	<b>2.96%</b>
7%	-9%	-14%	-17%	-12%	17%	11%
0.09	(45.54)	(10.55)	(10.06)	3.63	0.81	6.89
-	-	-	-	-	-	12.55
-	-	-	-	-	-	87
15	(31)	(42)	(50)	(46)	21	26
28	(19)	(30)	(33)	(37)	23	30
11,212	16,765	16,877	18,242	17,833	15,383	12,580
52,832	62,412	62,532	54,153	56,868	72,765	96,072
8,026	7,212	7,082	6,946	6,859	6,768	6,909
929	929	856	814	752	735	741

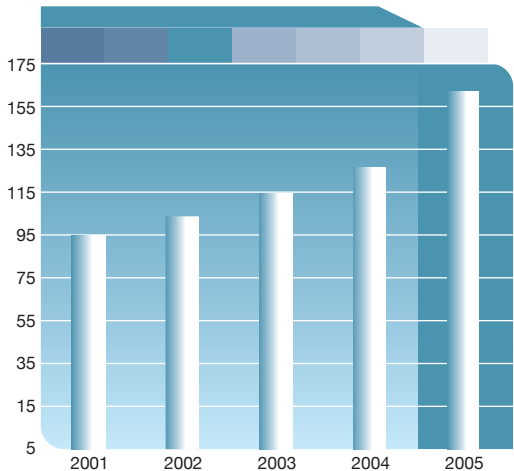
\* The Bank was listed on stock exchanges during the current year, therefore, the information pertaining to prior years is not given.



# Performance Highlights

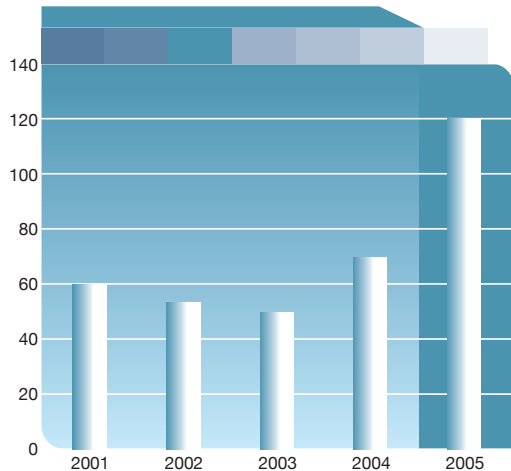
## Deposits

Rs. in billion



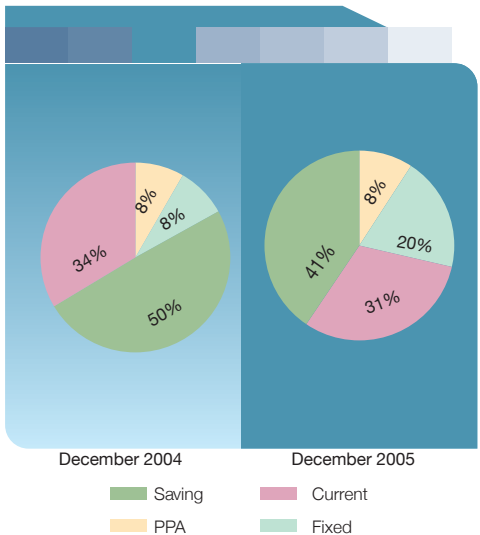
## Gross Advances

Rs. in billion



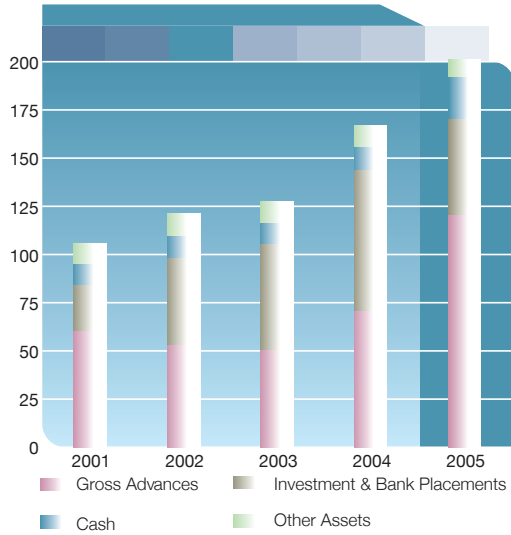
## Deposit mix

Rs. in billion



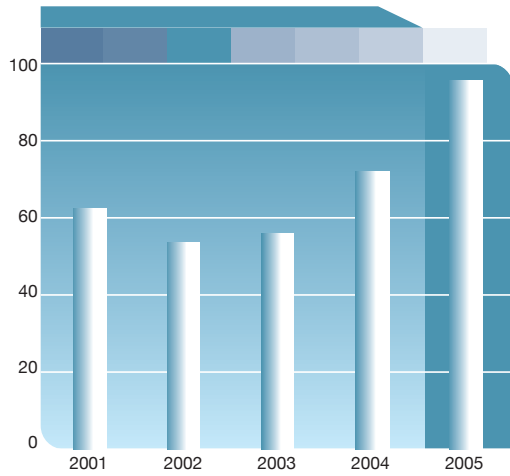
## Balance Sheet size & composition

Rs. in billion



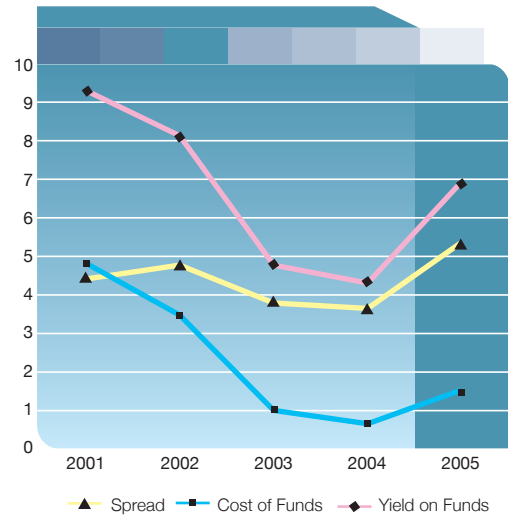
### Foreign Trade

Rs. in billion



### Interest / Markup on funds

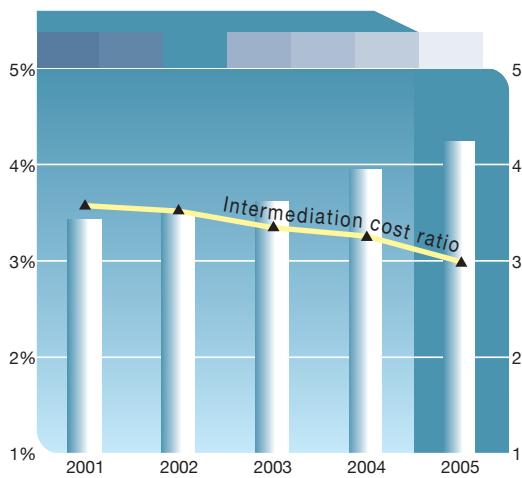
percentage



### Operating Cost

percentage

Rs. in billion



### Profitability

Rs. in billion

